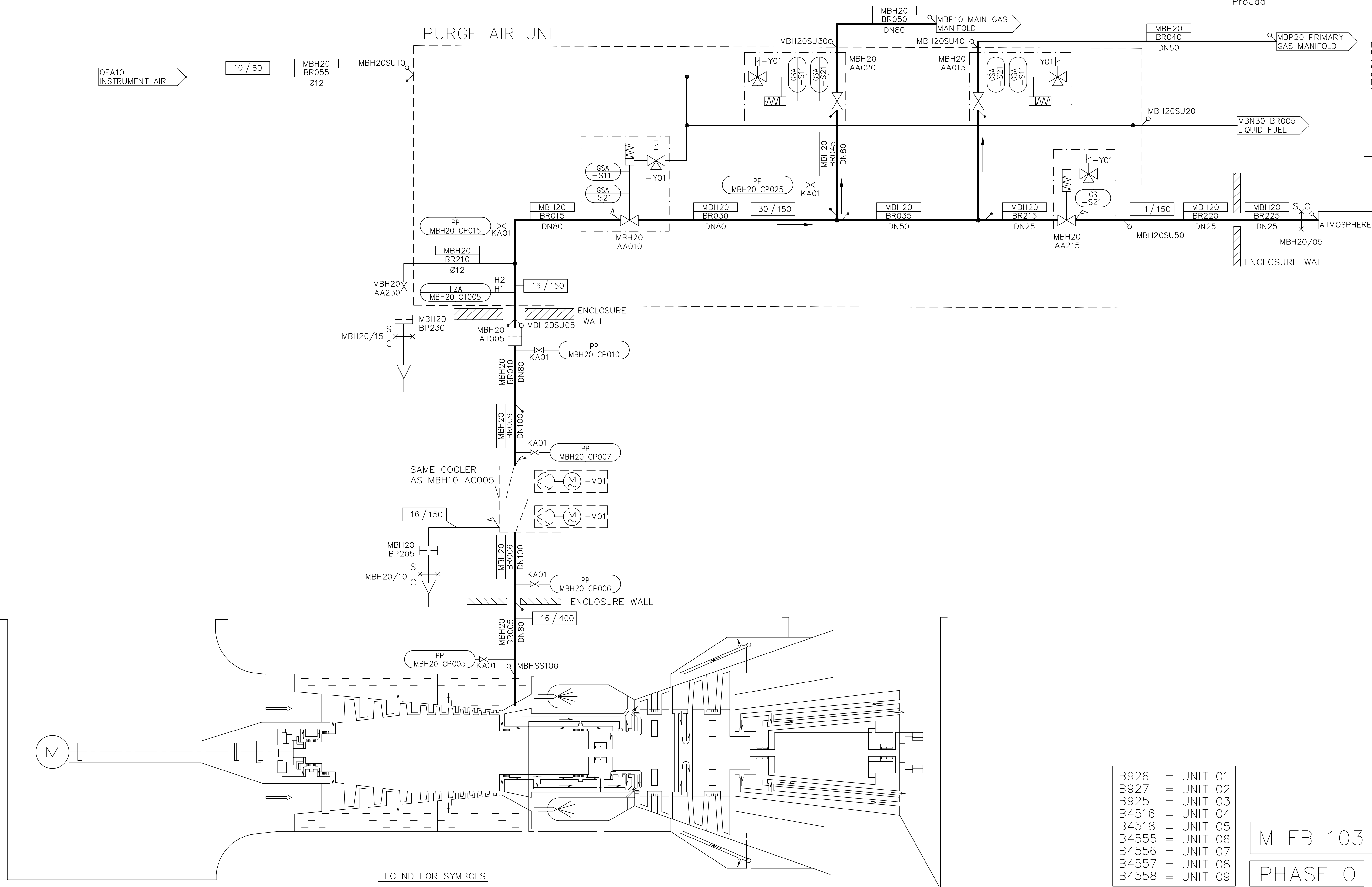


A  
B  
C  
D  
E  
F  
G  
H

A  
B  
C  
D  
E  
F  
G  
H

PURGE AIR UNIT

ProCad



We reserve all rights in this document and its contents. No part of this document may be reproduced, stored in a retrieval system, or transmitted in any form or by any means, electronic, mechanical, photocopying, recording, or by any information storage and retrieval system, without the prior written permission of Siemens AG.

LEGEND FOR SYMBOLS

- X DELIVERY LIMIT:
- C=CUSTOMER
- S=SIEMENS
- PIPE LIMIT
- SYSTEM LIMIT
- DESIGN DATA LIMIT
- DESIGN PRESS./TEMP.

DESIGN DATA 16/400 MEDIUM = AIR  
DESIGN DATA 30/150 MEDIUM = GAS

- B926 = UNIT 01
- B927 = UNIT 02
- B925 = UNIT 03
- B4516 = UNIT 04
- B4518 = UNIT 05
- B4555 = UNIT 06
- B4556 = UNIT 07
- B4557 = UNIT 08
- B4558 = UNIT 09

M FB 103  
PHASE 0

b	B-NUMBERS AND UNIT NUMBERS ADDED	05.03.01	GA/SM
Latest rev.	Revision text	Rev. date	Prepared by

Original Date	Based on Doc. No / Latest revision	Title	
03.11.12	992874 / 6	PURGE AIR SYSTEM DUAL FUEL	
Appr. by	Designation	Order No	Plant or type
2005-03-03 Fredrik Andersson	MBH20		
Checked by	Prepared by	Res. dept.	Document No.
2005-03-03 Goran Andersson	SUMA/M.EKMAN	GPML	2046021
Latest revision	Archive	No. of sh.	Sheet
b	9100	1	1



Lang. E